

26th year 13th Issue

April 2014

#### INSIDE THIS ISSUE:

*Scholarship Winners* 1

*Scholarship Winner Pictures* 2

*Youth Energy Camp* 3

*Energy Assistance* 4

*Boardroom News* 4

***Be involved and make a difference. Go to [www.action.coop](http://www.action.coop) learn about the issues and be apart of the Co-operative Action Network.***

Scholarship applicants can win a award no more than twice. A high school recipient this year is eligible again as a college student next year. If you did not receive an award this year, you are welcome to submit next year. We appreciate all the excellent applicant interest and wish we could reward all. NEA is, along with Tri-State G&T and Basin Electric, proud to award a total of \$8500.00 in scholarships to NEA's membership youth this year!

The 2014 Scholarship Committee consisting of two NEA board members and/or employees and two high school representatives, scheduled to meet on February 25, 2014, for the difficult task of selecting the 2014 Basin Electric, Tri-State Generation and Transmission, and Niobrara Electric Association Scholarship Winners. The Winners are as follows:

(Basin) Wyoming High School \$1000.00 Scholarship

**Kristy DeGering**

(NEA) Nebraska High School \$1000.00 Scholarship

**Levi Wilson**

(NEA) Wyoming College \$1000.00 Scholarship

**Colter Larson**

(NEA) Nebraska College \$1000.00 Scholarship

**Jeffrey Smith**

(Tri-State) Wyoming Jerry Scott \$500.00 Community Service Scholarship

**Drew Hester**

(Tri-State) Nebraska Jerry Scott \$500.00 Community Service Scholarship

**Taryn Thayer**

(NEA) At Large \$500.00 Scholarship

**Bryce Sturman**

(NEA) At Large \$500.00 Scholarship

**Philip Parker**

(NEA) At Large \$500.00 Scholarship

**Dax Dockery**

(NEA) At Large \$500.00 Scholarship

**Hannah Grote**

(NEA) At Large Scholarship

**John Murphy**

(NEA) At Large Scholarship \$500.00

**Hailey Bruegger**

(NEA) Non-Traditional \$500.00

**Desiree Gray**



Dax  
Dockery



Kristy  
DeGering



Drew  
Hester

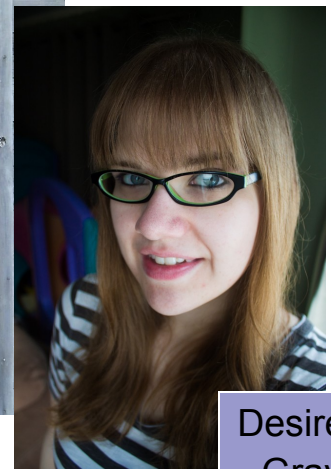
Hannah  
Grote



Taryn  
Thayer



Bryce  
Sturman



Desiree  
Gray

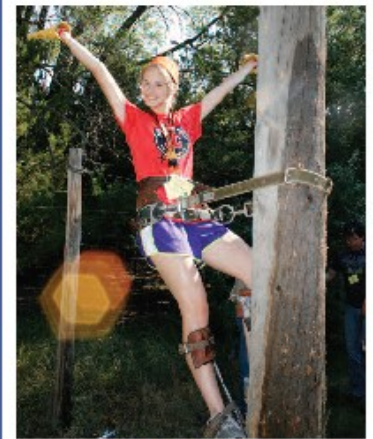




John  
Murphy,  
Hailey  
Bruegger,  
Jeffrey  
Smith,  
and Colter  
Larson.



Not pictured  
Philip Parker



## NREA YOUTH ENERGY CAMP

JULY 14 - 18, 2014



NEBRASKA STATE 4-H CAMP  
HALSEY, NEB.

If you are interesting in Energy Camp, call the NEA office and speak with Twyla. You can visit the NEA website or our fb page to see the full NREA Youth Energy Camp brochure and print off an application. Applications must be received by April 23rd.

[www.niobrara-electric.org](http://www.niobrara-electric.org)

[www.facebook.com/NiobraraElectric](https://www.facebook.com/NiobraraElectric)





NEA NEWS is a publication of Niobrara Electric Association., Inc

PO Box 697

Lusk WY 82225

Phone: 307-334-3221

Fax: 307-334-2620



**Touchstone Energy<sup>SM</sup>**

### Office Hours

Monday—Thursday

7:30 am—5:00 pm

Fridays 7:30 am—  
4:00 pm

**Electricians Department**

**7:00 am—5:30 pm (M-F)**

**Outages** ....1-800-322-0544  
or 307-334-3221

Phones are answered 24 hours a day. Phones will be answered by Niobrara Electric Association during office hours and the Niobrara County Sheriff's office will take all other calls and dispatch NEA personnel.



We are wrapping up the planned upgrades on the line from Lusk to Manville soon. This is the first leg of many to get the main feeders in the system upgraded for capacity and reliability, and in some cases like this, improve accessibility to the lines.

As you drive by the line, you may notice the spacing between the poles is shorter; this is to increase the ability to carry the weight of snow and ice on the line. The other thing you may notice is that the wire looks more like a ribbon; it is actually two wires wound around each other to limit the ability of the wind to cause the line to gallop or bounce the lines when iced up. Another small difference is the size and placement of the cross arms to increase clearance between the wires to prevent bird kills and allow the wires to move in the wind without bumping each other. The less noticeable difference is that the poles are a stronger size than our lines were built with many years ago.

### **BOARD OF DIRECTORS**

#### District

John Hester	1	Keeline, WY	President
Andy Barnette	2	Lusk, WY	
David Keener	3	Marsland, NE	Sec./Treas
Bill Wilson	3	Harrison, NE	
Jack Hammond	1	Lance Creek, WY	
Jim Dunn	3	Harrison, NE	
Kenny DeGering	2	Lusk, WY	
Andy Greer	1	Lance Creek, WY	
JD Wasserburger	2	Lusk, WY	Vice President

## Boardroom News

### February Board Meeting

- Director Hammond spoke regarding Tri-State business.
- Director Keener discussed NREA business.
- Director Greer shared WREA information.
- Attorney Stecher spoke on collection matters.
- Line Superintendent Rick Bridge gave an operations report.
- Manager Ceaglske gave the managers report.