

29th year 6th Issue

July 2018

INSIDE THIS ISSUE:

Irrigation 1

Generators 2

Annual Hurt Man Training 3

Manager's Message 4

**Members who attended
Annual Meeting in person
will see their \$25.00 bill
credit on the June billing.**

**CO-OP CONNECTIONS LOCAL BUSINESS
PARTICIPANTS**

(CHECK WEBSITE FOR REGIONAL AND
NATIONAL DISCOUNTS):

- Herren Brothers True Value
- Same As It Once Was
- Country Corner Hair Shop
- Rough and Refined
- Miller Soap Company
- Bloomers

Irrigation Bill Payers

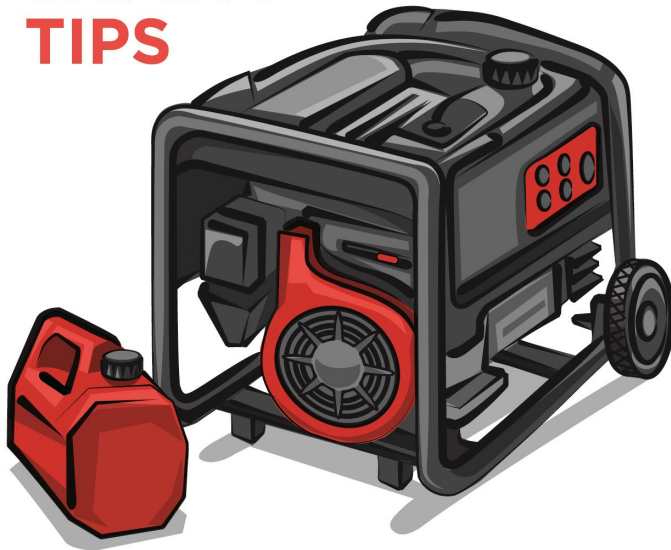
Irrigation season is in full swing and we want to remind members that irrigation bills are to be paid in full by the 20th of every month. We have EFT (Electronic Funds Transfer) available as a proven, safe and easy way to make sure payment is on time, every time.

Many of you are currently taking advantage of this payment option and we thank you! For those who have yet to use it, we encourage you to call our Billing Department and discuss how we can help you save time and hassle by getting started with EFT.

307-334-3221 and ask for Julie.



GENERATOR SAFETY TIPS



Never connect a standby generator into your home's electrical system. There are only two safe ways to connect a standby generator to your equipment.

Stationary Generator:

An approved generator transfer switch, which keeps your house circuits separate from the electric co-op, should be installed by a professional.

Portable Generator:

Plug appliances directly into the outlet provided on the generator.

Set up and run your generator in a well-ventilated area outside the home. Make sure it's out and away from your garage, doors, windows and vents. The carbon monoxide generated is **deadly**.

Use a heavy-duty extension cord to connect electric appliances to the outlet on the generator.

Start the generator first **before** connecting appliances.

Source: SafeElectricity.org

Due to Mother Nature's whims, ownership of a generator is a prudent investment.

We encourage our members to have access to a generator for times when our outage response may be hampered.

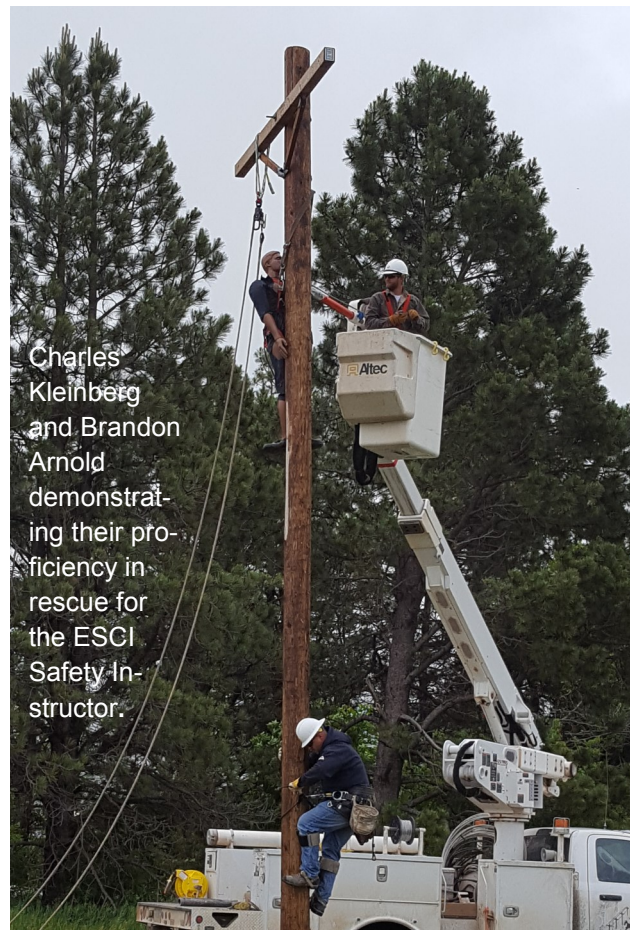
We are happy to help you with equipment and sizing information, as well as, making sure you are correctly connecting and using your generator.

Call and speak with us about installation of a **Transfer Switch**. To avoid back feed onto our lines from personal generators, we require this device on all new services and service upgrades - protecting the member and our crews.

Yearly recertification, testing the critical skills of Hurt-man Rescue; both pole top and from a bucket truck.



Charles Kleinberg and Rick Bridge working together.



Charles Kleinberg and Brandon Arnold demonstrating their proficiency in rescue for the ESCI Safety Instructor.

www.niobrara-electric.org

www.facebook.com/NiobraraElectric



nea@niobrara-electric.org

PO Box 697 Lusk, WY 82225

**"This institution is an equal
opportunity provider and
employer."**



Touchstone EnergySM

Office Hours

Monday—Thursday

7:30 am—5:00 pm

**Fridays 7:30 am—
4:00 pm**

Electrician Department

6:00 am—4:30 pm (M-TH)

Outages1-800-322-0544
or 307-334-3221

Phones are answered 24 hours a day. Phones will be answered by Niobrara Electric Association during office hours and the Niobrara County Sheriff's office will take all other calls and dispatch NEA personnel.

I've been digging around in the archives a bit for some information regarding territory boundaries. I found some documents dating back into the 1940's. One of the interesting documents was the original 1940 blessing from the PSC for a power plant and distribution system for the community of Gateway, in Niobrara County. It gave Frank Gorman permission to serve a community of about 80 acres in one location with the allowance to serve the same community in another location "if the community moves".

The more interesting document was the original transcript of the public hearing to establish the service territory of NEA that was held 70 years ago and finalized this month. NEA at its current size serves about 3000 meters over a 5400 square mile area with about 2300 miles of line. In the establishment of the territory, the original system was half again larger including most of Converse County extending past Glenrock, excluding Lusk, Douglas, and Glenrock. The original proposal was phased in with the first phase being 270 miles of line to serve 267 members headed west from Lusk towards Douglas. Phase B was to serve east to Harrison, and C was very loosely defined as north in transcript.

Just to see the conversation within the transcript, gives a taste of what it may have been like to be a part of the start of all of this. "I presume that the ranchers and farmers in this area are quite anxious for this service?" "That is right."

This hearing was the culmination of the efforts of all of the folks involved that started the process nearly 7 years before, maintaining momentum through WWII, when equipment and materials and able bodies were in limited supply. For those of you that are active on Facebook, we have posted a video about it online.

To this day, our system has maintained the member density of close to 1 meter per mile of line, while many coops see the population growth and edge up through the Wyoming average of 4 and past the national average of 6 meters and on into the low teens per mile for some near larger cities. NEA still ranks as one of the 10 least dense coops of the 800+ in the US, but all of the coops started in a similar manner, some local folks got together to make life better for everybody by making electricity available to all in areas that the investor owned utilities thought that it wasn't profitable enough to try.

Manager Kenny Ceaglske

BOARD OF DIRECTORS

District

John Hester	1	Keeline, WY	President
Andy Barnette	2	Lusk, WY	
David Keener	3	Marsland, NE	Sec./Treas
Bill Wilson	3	Harrison, NE	
Jack Hammond	1	Lance Creek, WY	
Jim Dunn	3	Harrison, NE	
Kenny DeGering	2	Lusk, WY	
Andy Greer	1	Lance Creek, WY	
JD Wasserburger	2	Lusk, WY	Vice President

Due to print timing no Board Report

