

31st year 6th Issue

July 2020

INSIDE THIS ISSUE:

What's on a Power Pole 1

New Line Pole Pictures 2

Shop Improvement/State Fair 3

Boardroom 4



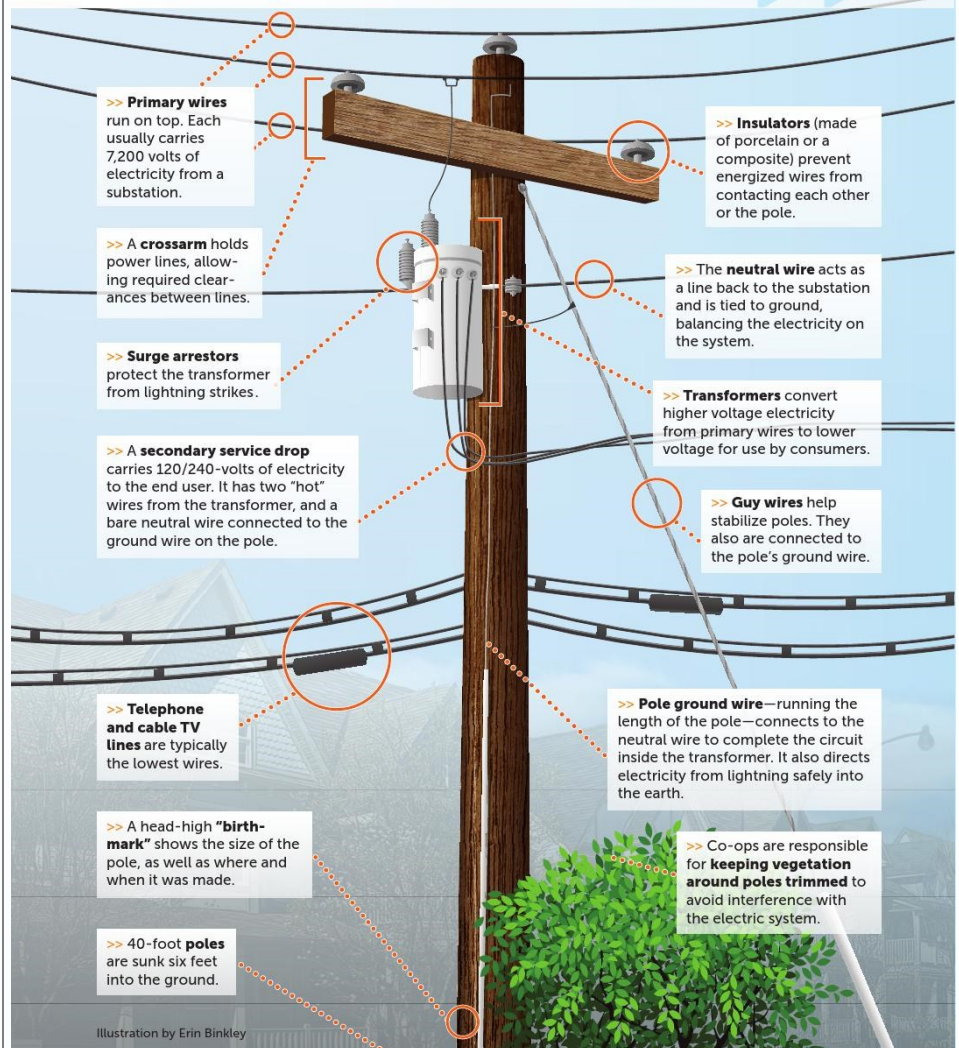
CO-OP CONNECTIONS LOCAL BUSINESS PARTICIPANTS

(CHECK WEBSITE FOR REGIONAL AND NATIONAL DISCOUNTS):

- Herren Brothers True Value
- Same As It Once Was
- Country Corner Hair Shop
- Miller Soap Company
- Bloomers

>> What's on that pole?

This illustration shows basic equipment found on electric power distribution poles. Not all poles have all this equipment on them. They vary according to location and the service they provide.



As a reminder, our power poles are solely owned by the cooperative and are never to be used for posting advertising, as a target for shooting, as a mount for consumer decoration or internet or satellite equipment, etc.



Summer construction is in full swing.

New poles for the 69kv line going north from NEA to Kirtly road were delivered in June. These poles are an impressive 60-90 feet tall. Class 1A poles, they are 24 inches in diameter at the butt. The double circuit improvement these poles support will allow us to feed from different directions, offering more options on how we feed Cheyenne River, Van Tassell, and Node.

Line Shop Gets A New Covering

Our line shop at Niobrara Electric was built decades ago and originally housed the office work force, the line crew and most of the trucks and equipment.

Though well built in its day, the building has been out grown and needed multiple interior fixes over the years. Space for utility equipment is a continuing issue.

This year, the exterior

of the line shop is getting a bit of functionality improvement. The old and damaged porch front is being reconstructed with an angled covering verses the original straight line.

The new materials and design change will improve entry in inclement weather, snow load and address drainage issues while also toning down direct sunlight.



Join us at the State Fair on Saturday, August 15th

Want to learn more about your local cooperative or maybe try your hand at climbing a pole under the guidance of a pro?

NEA will be the featured co-op on August 15th. Stop by and visit with our employees.



nea@niobrara-electric.org

PO Box 697 Lusk, WY 82225

"This institution is an equal
opportunity provider and
employer."



Touchstone EnergySM

Office Hours

Monday—Thursday

7:30 am—5:00 pm

Fridays 7:30 am—
4:00 pm

Electrician Department

6:00 am—4:30 pm (M-TH)

Outages1-800-322-0544
or 307-334-3221

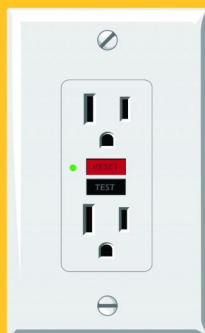
Phones are answered 24 hours a
day. Phones will be answered by
Niobrara Electric Association
during office hours and SRS will
take all other calls and dispatch
NEA personnel.

BOARD OF DIRECTORS

District

John Hester	1	Keeline, WY	President
Andy Barnette	2	Lusk, WY	
David Keener	3	Marsland, NE	Sec./Treas
Bill Wilson	3	Harrison, NE	
Jack Hammond	1	Lance Creek, WY	
Jim Dunn	3	Harrison, NE	
Neal Wurdeman	2	Lusk, WY	
Andy Greer	1	Lance Creek, WY	
JD Wasserburger	2	Lusk, WY	Vice President

WATT'S THE DIFFERENCE?

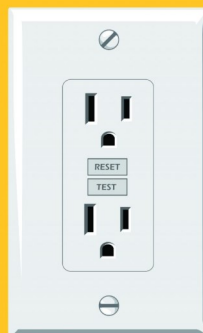


Ground Fault Circuit Interrupter

Prevents electrical shock by detecting
variations in current.

Install in areas where water and
electricity are in close proximity.

Test outlets with GFCIs monthly; if
they don't work properly, consult
your electrician.

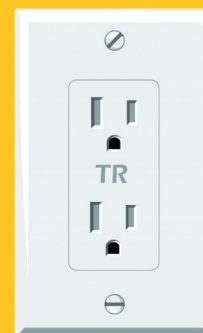


Arc Fault Circuit Interrupter

Prevents electrical fires caused by arc
flash. Usually installed by an electrician.

An arc is an electrical discharge that
can cause intense heat or light.

It interrupts the circuit when it detects
an arc or other abnormalities in the
flow of electricity.



Tamper Resistant Outlet

Prevents shocks caused by tampering
with an outlet.

The protective shutters are designed to
move when a plug is correctly inserted.

Became part of the National Electrical
Code in 2008; if your home does not
have these, install childproof devices.

**Safe
Electricity.org[®]**

Board Minutes

- Line Superintendent, Rick Bridge, spoke about work in Podolak substation finishing up, contractors have poles reframed to Kirtly Rd. He discussed recent outages, gave an update on rotten pole changes and reported no accidents or injuries.
- Manager Kevin Inman gave update on personnel issues and a new hire, as well as West load update.
- Director Keener spoke on NREA business.
- Director Greer spoke on WREA business.
- Director Wilson spoke on Tri-State business.